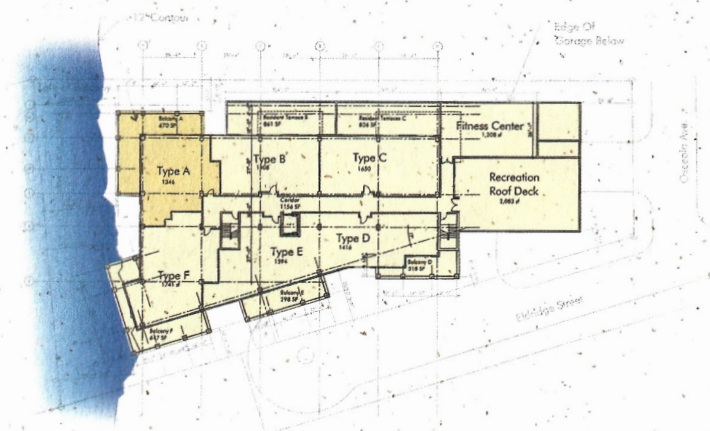


The Athenian (Type A Unit)

Two bedrooms / Two baths
 Interior – 1562sf; Balcony – 765sf

Interior Features include:

- Large balcony overlooking the bay
- Full-size washer & dryer
- Granite countertops
- Classic Pedestal sinks
- Tile Floors in kitchen & baths
- Premium carpeting
- Large walk-in closets
- Breakfast nook with bay window
- His & hers vanity sinks in master bath

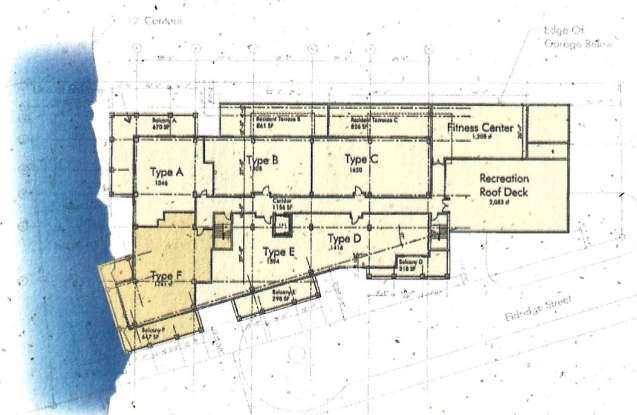
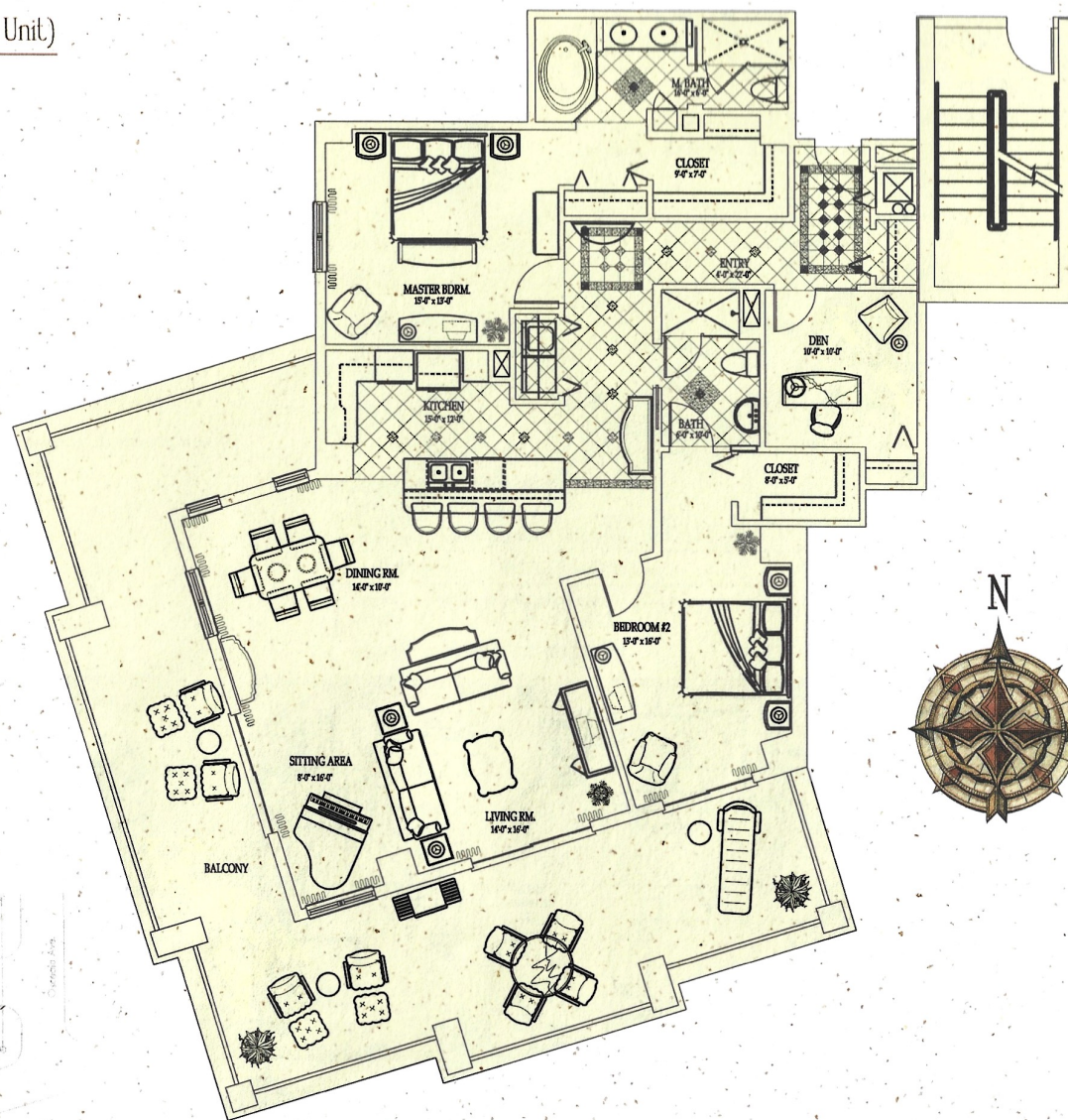


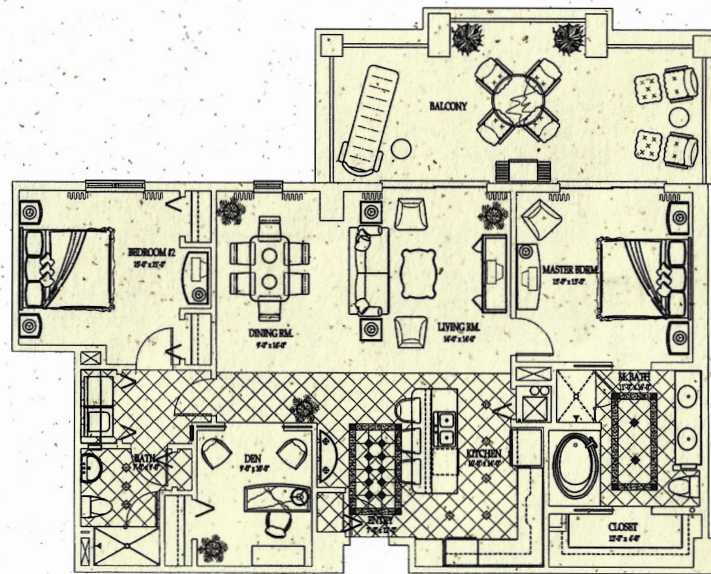
The Monte Carlo (Type F Unit)

Two bedrooms / Two baths
 Interior — 1894sf; Balcony — 909sf

Interior Features include:

- Large balcony overlooking the bay
- Study den with double french doors
- Full-size washer & dryer
- Granite countertops
- Classic Pedestal sinks
- Tile Floors in kitchen & baths
- Premium carpeting
- Large walk-in closets
- His & hers vanity sinks in master bath



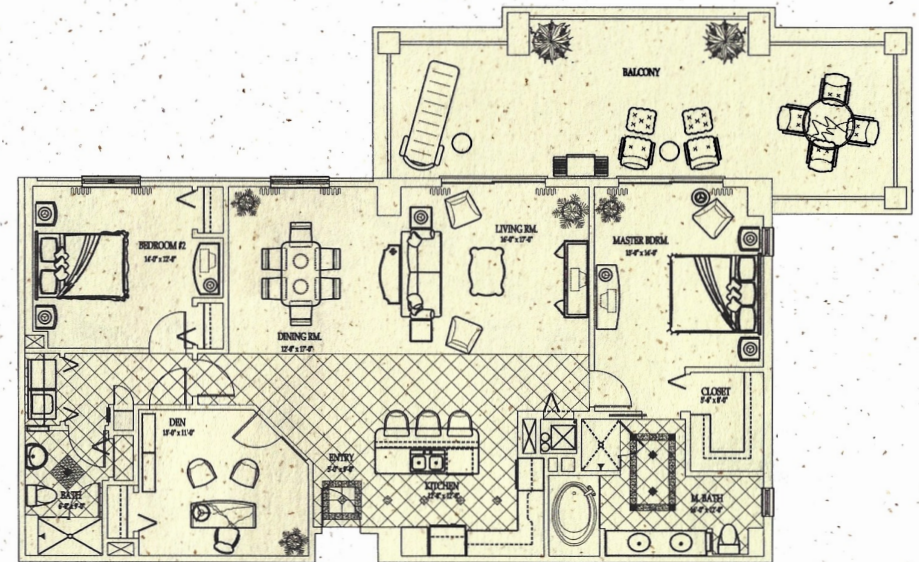


The Barcelona (Type B Unit)

Two bedrooms / Two baths / Den
Interior — 1483sf; Balcony — 388sf

Interior Features include:

- Private balcony
- Study den with double french doors
- Full-size washer & dryer
- Granite countertops
- Classic Pedestal sink in spare bath
- Tile Floors in kitchen & baths
- Premium carpeting
- His & hers vanity sinks in master bath

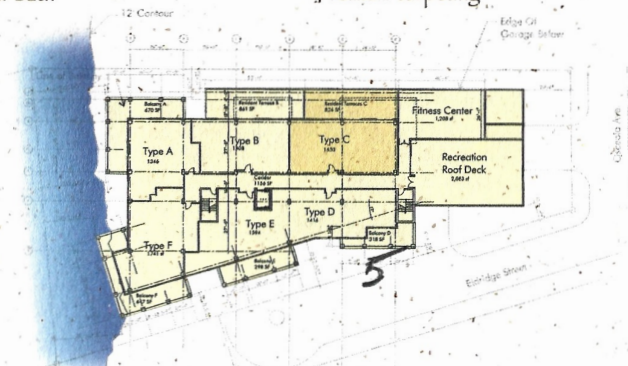
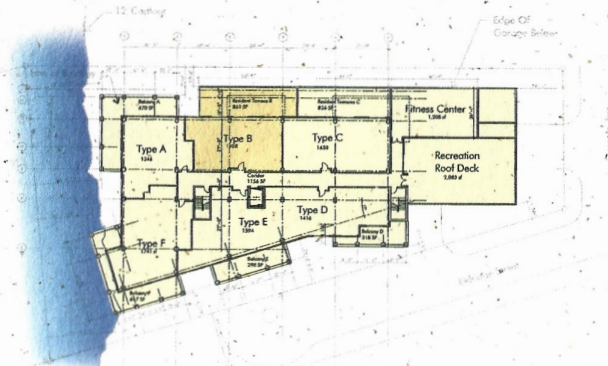


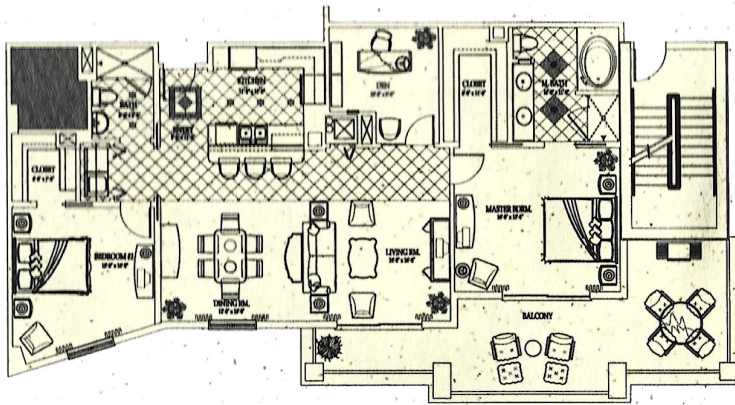
The Cordoba (Type C Unit)

Two bedrooms / Two baths / Den
Interior — 1719sf; Balcony — 550sf

Interior Features include:

- Private balcony
- Study den with double french doors
- Large walk-in closet in master bath
- His & hers vanity sinks in master bath
- Full-size washer & dryer
- Granite countertops
- Classic Pedestal sink in spare bath
- Tile Floors in kitchen & baths
- Premium carpeting



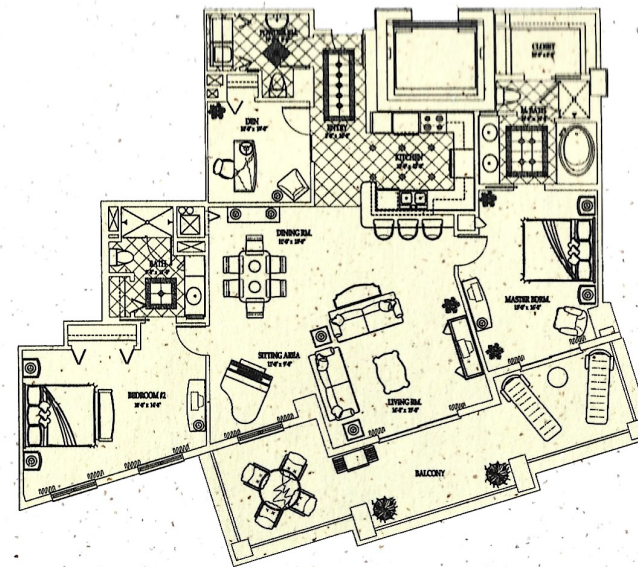
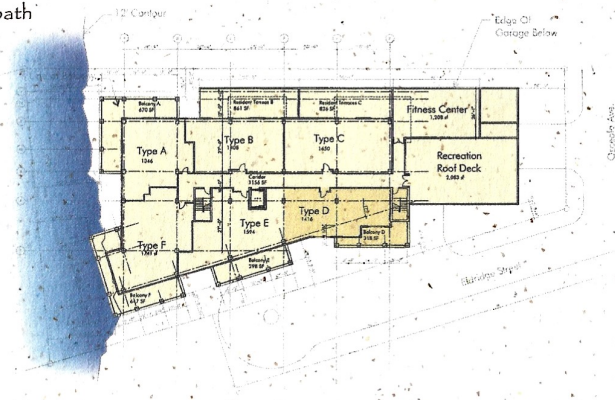


The Damascus (Type D Unit)

Two bedrooms / Two baths / Den
Interior — 1593sf; Balcony — 391sf

Interior Features include:

- Private balcony
- Study den with double french doors
- Large walk-in closets in both bedrooms
- His & hers vanity sinks in master bath
- Full-size washer & dryer
- Granite countertops
- Classic Pedestal sink in spare bath
- Tile Floors in kitchen & baths
- Premium carpeting



The Gibraltar (Type E Unit)

Two bedrooms / Three baths / Den
Interior — 1741sf; Balcony — 427sf

Interior Features include:

- Private balcony
- Study den with double french doors
- Large walk-in closet in master bath
- His & hers vanity sinks in master bath
- Private bathroom for second bedroom
- Full-size washer & dryer
- Granite countertops
- Classic Pedestal sink in spare bath
- Tile Floors in kitchen & baths
- Premium carpeting

